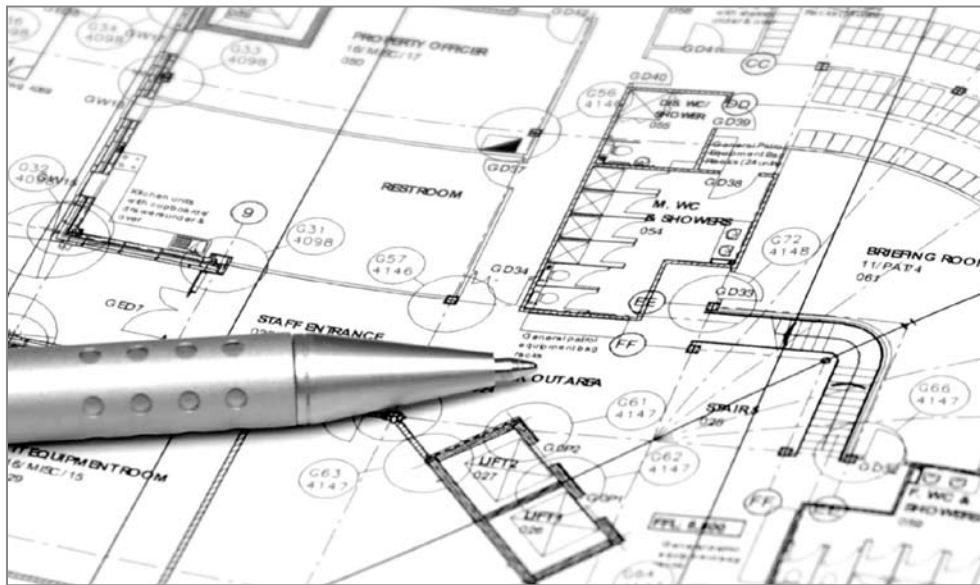


# Access to Education

Architectural Ironmongery | Access Control | Door Automation



Complete door and architectural ironmongery scheduling and project management solutions for the education sector.



SENDA (Special Educational Needs and Disability Act 2001) amends Part IV of the Disability Discrimination Act (DDA) to establish legal rights for existing and potential pupils and students with disabilities. Although Part III of the DDA specifically excludes educational services from the provisions relating to goods, facilities and services, it does cover non-educational services carried out from an educational building.

Like the DDA Part III, the duties for education were introduced in stages. Most of the Act was implemented in September 2002; the duty to provide auxiliary aids a year later and the requirement to alter "physical features" came into force in September 2005. The effect on the design and construction of educational buildings are similar to that shown for buildings where there are services provided to the general public.

The products and services offered under the Access to Education initiative offer a complete design specification for doorsets and architectural hardware, assisting service providers to meet their obligations under the DDA and the guidance given in BS 8300:2001. This package is offered with comprehensive performance certification to current EN standards.

Regardless of size or location of your project, we can arrange training and installation; implement manufacturers' guarantees and arrange ongoing service contracts for the life of your system through our service partners.

# Access to Education

The Lloyd Worrall Group presents a total package solution for architectural ironmongery, automatic and manual door operating devices, access control security devices and signage solutions specifically designed and developed for the education sector.

Access to Education has been launched to offer a comprehensive design, scheduling and project management service to deliver a co-ordinated package of architectural hardware and installation services for your total project requirements.

The products within the Access to Education range have been carefully selected following in-depth research into the "whole life cycle costs" of ironmongery and performance doorsets, and allow us to offer our total package solution with comprehensive product performance warranties.

Our technical consultants will prepare detailed ironmongery schedules for your doorset solutions, co-ordinating the hardware requirements for each individual project, ensuring a coherent package of products.

Products chosen for the Access to Education range have been selected for their durability and high performance standards combined with a high degree of resistance to physical abuse and severe frequency of usage found within an educational environment.



### Locking Devices

Classroom function locksets operate quite simply: there is a key lock on the outside, with no ability to lock the door from the inside. Even when the door is locked from the outside, the door can be opened from the inside thus meeting the needs of security whilst satisfying the Fire Officers requirements for egress.

Classroom function locksets were developed around the perceived safety of children, and the inevitable horseplay that all schools experience. In terms of safety, it is important that classrooms never become locked rooms from which there is no exit. As we all know, a door that can be locked from the inside is a prank waiting to happen when a teacher exits the room; however there are solutions to this problem:

**Dual function lockset:** the dual function lockset requires a key to lock the door from the inside or the outside. When the door is locked from either side, it cannot be opened from the outside, but can always be opened from the inside. With these operating characteristics, a teacher can quickly “lock down” the room without entering the corridor. Yet, in the case of an emergency, the door is fully operable from the inside of the room. Because the door requires a key to lock the door, students cannot lock the door from the inside as a practical joke and pupils dismissed from a class cannot return to the classroom. The key holder can also change the function of the lock to normal mode, operated by levers, for day-to-day use as required.

**Classroom cylinder lockset:** The cylinder has a thumbturn which turns in one direction only - to unlock the door. The cylinder is also fitted with a special clutch mechanism. Should someone hold on to the thumbturn in an attempt to prevent access to the room from the inside, the key will override the thumbturn and allow entry, making it ideal for classroom situations.

Our technical consultants can advise on the most suitable locking device for each individual situation.



### Access Control

As security is an ever present challenge, sometimes it is vital to control access into individual rooms and in some cases entire buildings, to protect the staff, pupils and equipment. For example, access into a nursery; a hall of residence or a school laboratory. Whatever the reason, our specialist technical consultants will provide a comprehensive access control audit schedule, tailored to your exact requirements to provide you with all the security, convenience and control you need.



### Door Controls

Doors in schools are continually in use; classified as heavy to severe usage doors they require a high resistance to physical abuse. Cam-action door closers with a non-projection arm for ease of use and to discourage vandalism and floor springs for heavy usage and wide leaf doors is one solution. Lloyd Worrall can advise on the most appropriate closing device for each project.



We offer full compliance with the opening and closing forces recommended in part M of the building regulations without compromise to the fire integrity (part B) of the doorset. All of our door closing devices meet the current European requirements and EN standards and are offered with full certification and product warranties.



### Finger Guard Protection

To protect younger children's fingers from the dangers of closing doors, Access to Education offers a range of finger guard protection, including simple door hinge guards which cover the hinge area and can be fitted to the front and rear of the door to full length protectors. These cover the hinge cavity area, making it impossible for children to trap their fingers.

### Signage Solutions

We can provide a sign scheduling service producing a fully detailed strategy encompassing “wayfinding” methodology and DDA obligations and recommendations as well as mandatory fire and escape route signage.





# Projects

Lloyd Worrall is committed to offering unique and tailored packages to the education sector.

Some of our recent projects include:

The University of Bolton

Chaucer Business & Enterprise College : Sheffield

City of London Academy

Barnsley Grouped Schools PFI

Stanway School : Colchester

Grace Academy : Birmingham

Visit our website education project page for further details on these and many more Lloyd Worrall projects : [www.lloydworrall.co.uk/education\\_projects](http://www.lloydworrall.co.uk/education_projects)



Lloyd Worrall  
Unit 6, Denbigh Hall  
Bletchley  
Milton Keynes  
MK3 7QT  
T: 01908 643 364  
F: 01908 643 643  
E: miltonkeynes@lloydworrall.co.uk

Lloyd Worrall  
Unit 13, Chamberlayne Road  
Moreton Hall Industrial Estate  
Bury St Edmunds  
IP32 7EY  
T: 01284 762 002  
F: 01284 762 003  
E: bury@lloydworrall.co.uk

Lloyd Worrall  
Units 10/11, Attercliffe Common Industrial Estate  
Fell Road  
Sheffield  
S9 2AL  
T: 0114 244 3350  
F: 0114 244 4219  
E: sheffield@lloydworrall.co.uk

Lloyd Worrall  
Unit 1, Bentinck Street Industrial Estate  
Bentinck Street, off Chester Road  
Hulme, Manchester  
M15 4LN  
T: 0161 833 0270  
F: 0161 832 3904  
E: manchester@lloydworrall.co.uk

Lloyd Worrall  
Units 13/16, Noble Street Industrial Estate  
off Scotswood Road  
Newcastle upon Tyne  
NE4 7PD  
T: 0191 226 0888  
F: 0191 226 0803  
E: newcastle@lloydworrall.co.uk

[www.lloydworrall.co.uk](http://www.lloydworrall.co.uk)

Yannedis  
Unit 3, Woodford Trading Estate  
Southend Road  
Woodford Green, Essex  
IG8 8HF  
T: 020 8550 8833  
F: 020 8551 0026  
E: ask@yannedis.com

[www.yannedis.com](http://www.yannedis.com)

MB Architectural  
14a Falcon Road  
Belfast  
BT12 6RD  
T: 028 9038 0200  
F: 028 9038 0201  
E: ask@mbarchitectural.com

[www.mbarchitectural.com](http://www.mbarchitectural.com)

MB Doorplan  
62-63 Birch Avenue  
Stillorgan Industrial Park  
Blackrock  
Co Dublin  
T: 00353 1 293 5958  
F: 00353 1 293 5959  
E: ask@mbdoorplan.ie

[www.mbdoorplan.ie](http://www.mbdoorplan.ie)