

# Made For You

bespoke door furniture



**Safe**  
**Secure**  
**Accessible**

---

Ironmongery

---

Doorsets

---

Access Control

---

Door Automation

---

Handrail & Balustrade

---

 [lloydworrall.co.uk](http://lloydworrall.co.uk)

# Every project is different

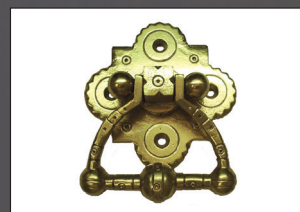
**Lloyd Worrall is committed to offering unique and tailored ironmongery packages to every project it is involved with.**

When a project requires a special design edge our **Made For You** bespoke service will transform your design ideas from paper to product. Working with traditional ironmongery manufacturers, we will provide samples, produce castings and supply your custom-made door furniture.

From modern stainless steel designs to brass and bronze restoration pieces, we will help to ensure your project is unique.

The ironmongery required for restoration and heritage projects will either need to be restored, have new items designed or involve a mix of both.

We have experience in sourcing and supplying restoration ironmongery, including matching new ironmongery to original designs.

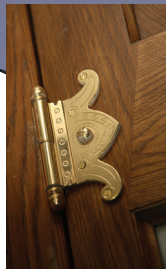


We work with a network of skilled craftsman to ensure attention to detail to both recreate the past whilst ensuring the ironmongery meets with current regulations.

We schedule your project requirements with all items adhering to the latest British and European standards as well as meeting the requirements of building regulations and of course BS 8300.

**This brochure illustrates the variety of bespoke work we do.**

# St Pancras International



The re-development of St Pancras Station is the incredible £800 million architectural restoration and extension of a unique London landmark.

While the structure of the station was changed dramatically, the details of the building were followed, copied and restored very precisely and this included the architectural ironmongery.

Heritage knowledge and expertise were required on the part of Yannedis who were the architectural ironmongers on the restoration part of the project.

The drawings for the ironmongery were compiled 6 1/2 years ago. Our London branch Yannedis had to work to an extremely prescriptive brief because of the listing status of the building and to avoid any possibility of contractors changing the specification.

Much of the hardware had to be made from scratch based on the original designs, including Jester hat escutcheons and 12 types of hinges. The espagnolette bolts on the windows between the station and the hotel measure from the bottom of the window to the fan light at the top, acting like a hinge to support the huge weight of the windows.

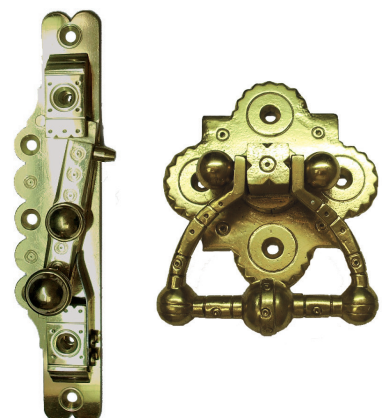
Attention to detail both to recreate the past and to ensure the ironmongery met with current regulations had to be achieved by Yannedis.

The huge solid-oak doors to the booking office now feature modern door springs and electro-magnetic closers to comply with 21<sup>st</sup> century regulations. The doors are actually too big to open and

close thousands of times a day. They are opened every morning and closed at night while modern glass doors in the opening offer access.

"We involved Yannedis early in the process and that was vital to the success of the scheme. Yannedis did not simply put in a price and wait for instruction. They were closely involved in the project, working hand-in-hand with Arup's architectural team."

Alastair Lansley, architect LCR





# Windsor Castle



Following the fire at Windsor Castle in 1992, our London branch - Yannedis - was commissioned to recreate the damaged ironmongery and provide new bespoke designs in keeping with the Royal Palace.

This was a very special refurbishment project, requiring all the knowledge and expertise that Yannedis has built up in heritage restoration over the years.

Because of the fire, many areas being refurbished have unique designs that needed to be recreated in detail to match new doors and those having lost their original ironmongery.

The detailing of the ironmongery was extraordinary and much careful, painstaking work was needed to restore and recreate the items.

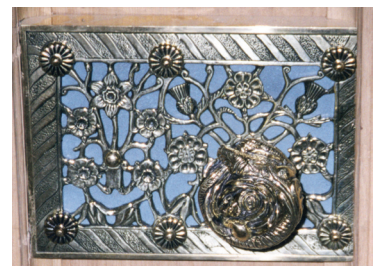
Architect Giles Downes explains:

"The general locks include the flower symbolic to England, Scotland and Wales with a Dragon and Rose for the handle. The main handle for St George's Hall shows St George as a Roman soldier on horseback fighting the dragon, inspired by a carved boss in Westminster Abbey.

From my original design drawings, three-dimensional models were then made in wax by an Artist in Oxford; these were then cast in brass and chased and assembled by Yannedis into the locks,

which they had specially made, matching the pattern of the old Georgian traditional locks used in the Castle.

This most unusual project was carried through by Yannedis on time and without any complications."



# Palace of Westminster

## Architects brief:

Required the specification and supply of unique designs that needed to be created in detail to match new doors and those doors having lost their original items of ironmongery.

## Solution:

Using our heritage knowledge, recreated ironmongery sympathetic in style and finish to the existing Gothic details whilst meeting current building design regulations.

## Award:

Winner of the Restoration Category Award in the Architectural Ironmongery Specification Awards sponsored by RIBA.



# Penthouse, Kenwood Place London

## Architects brief:

To provide a specification encompassing high quality, attention to detail and design.

## Solution:

Bespoke door furniture produced in a high quality, natural bronze and nickel finishes.

To emphasis the creativity and high specification of the penthouse the lever handles are on a bespoke semi-circular backplate.



# Manor Court London

## Architects brief:

A bespoke handle developed from an idea of the clients, reflecting designs seen when in the US.

The brief also required the handles to be made in the UK, be of high quality and meet tight delivery schedules.

## Solution:

The Concept Geometric Series.

Finished by hand and manufactured from turning a thick bar of solid stainless steel, this design met all the clients requirements.



# 20 Palace Street London

## Architects brief:

To develop a bespoke range of ironmongery that would reflect the 1960's design era of the existing building.

## Solution:

A range of square profile lever handle door furniture capturing the 1960's flavour.

## Award:

Residential Buildings  
Commendation Award received  
in the Architectural Ironmongery  
Specification Awards sponsored by  
RIBA.





# V&A Clothworkers Centre London

## Architects brief:

To provide a bespoke handle that was comfortable and practical but reflected the interest in good design that both the architect and client share.

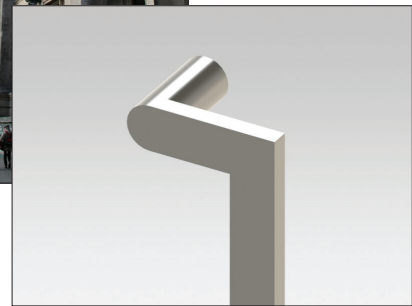
The handle needed to be manufactured in various sizes and in nickel and stainless steel finishes.

## Solution:

We developed a handle with the architect based on an existing shaped section of metal.

The result was a handle which complements a building that has history but also a new future.

The handle sizes, finishes and fixings were changed to suit the different areas and uses within this project so that the design theme is maintained, adding to the centre's identity.



# Regents Park Open Air Theatre

## Architects brief:

Required a bespoke pull handle for the box office and entrance doors to be a unique feature and complement other design details of the building.

## Solution:

A full height, handmade pull handle with black steel ends to match the door frame and highlight the "golden" appearance of the handle grip.

This combination echoes the gold and black screens that are in use at the theatre.

The handle serves as an exclamation mark highlighting the entrance to the theatre as you approach from across the park.



# Festive Theatre

## Architects brief:

To develop a handle that had the advantages of a "D" handle but with more design interest.

## Solution:

The Academy pull handle.

This handle retains the functionality of the basic "D" handle but adds an elegance.

Subverting the original design gives it a twist of interest whilst remaining cost-effective.

Made by us in the UK, the handle is available in lengths to suit the architects detail. A matching lever handle and other items in the "Academy" range are also available.



# Every project is different

Our aim is to translate an architect's vision into reality.

From modern designs to heritage projects, we will help to ensure your project is unique.



# Contact Us

## Lloyd Worrall Manchester

**E:** manchester@lloydworrall.co.uk  
**T:** 0161 886 2740

Lloyd Worrall, Unit 25, Longwood  
Road, Trafford Park, Manchester,  
M17 1PZ

## Lloyd Worrall Milton Keynes

**E:** miltonkeynes@lloydworrall.co.uk  
**T:** 01908 622 650

Lloyd Worrall, Unit 2, Bilton Road,  
Bletchley, Milton Keynes, MK1 1HW

## Lloyd Worrall Newcastle upon Tyne

**E:** newcastle@lloydworrall.co.uk  
**T:** 0191 226 0888

Lloyd Worrall, Units 13-15, Noble Street  
Industrial Estate, off Scotswood Road,  
Newcastle upon Tyne, NE4 7PD

## Lloyd Worrall Sheffield

**E:** sheffield@lloydworrall.co.uk  
**T:** 0114 244 3350

Lloyd Worrall, Unit 5, Magna 34  
Business Park, Temple Road,  
Templeborough, S60 1DX

## Wolverhampton

### Doorsets, Access and Autos:

**E:** enquiries@lloydworrall.co.uk  
**T:** 01902 866 564

### Handrail and Balustrade:

**E:** handb@lloydworrall.co.uk  
**T:** 01902 866 561

Lloyd Worrall, The Technology Centre  
Wolverhampton Science Park,  
Glasier Drive, Wolverhampton,  
WV10 9RU

This brochure is not intended to be used for project specification. It offers an overview of the products and services available. If however, a product is specified from this brochure you are advised to contact us first to check if there have been any changes or alterations to the product specification.

The information contained in this brochure in both text and picture format is believed to be accurate and correct at time of going to press. However, due to circumstances beyond our control, and with a policy of continued product and service development, the information contained may be subject to change. We therefore reserve the right to alter or adjust any details illustrated in this brochure without prior notice.

**Safe  
Secure  
Accessible**

---

Ironmongery

---

Doorsets

---

Access Control

---

Door Automation

---

Handrail & Balustrade

---

 **lloydworrall.co.uk**